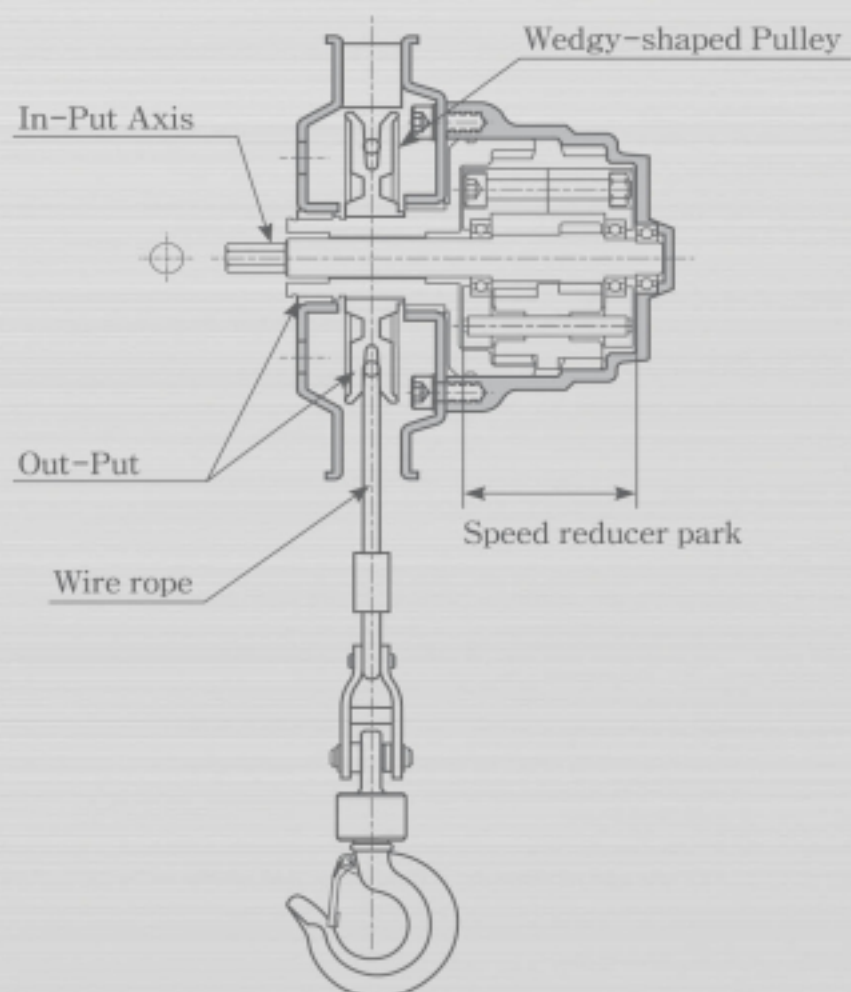


# A Versatile Portable Winch

# Pulley-Man



300kg



600kg

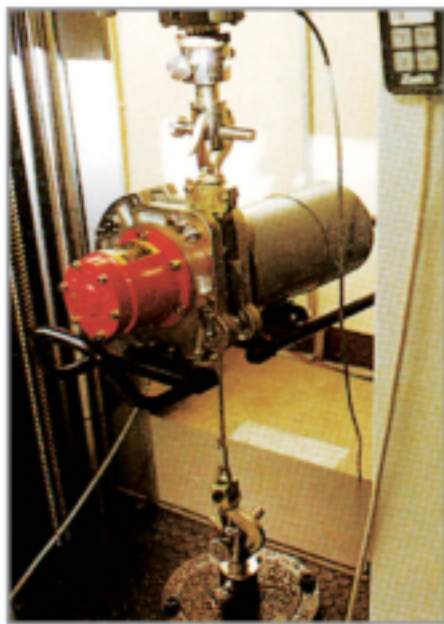


# Pulley-Man, featuring a attached-wire & detached-wire type, is the newest well known technology all over the world.

Pulley-Man, a trouble-free automatic brake and reduction gear system, is the first technology in the world.

Pulley-Man, is designed the lightest one for unlimited distance.

By this reasons, we are exporting to many country and expending ...



Pulley-Man was tested by korean Occupation Safety & Health Agency (S Mark) & European TUV(CE Mark) successfully for Automatic brake, Reduction gear and wire sliding.



## Pulley-Man, remarkable technology in winch world ...

- Trouble-free automatic brake system.
- Unlimited working distance & condition
- Smallest size & lightest weight(3.5kg)
- Attached & detached wire system
- Available for vertical, horizontal, inclined, setting-to-body, wire hook setting to both sides uses
- Applicable for various power supplies(AC220V/110V, DC12V, cordless drill, electric drill, air drill and others)





# Pulley-Man, Only 3.5kg outstanding light weight though, it has incredible power lifting 600kg and drawing 3ton.

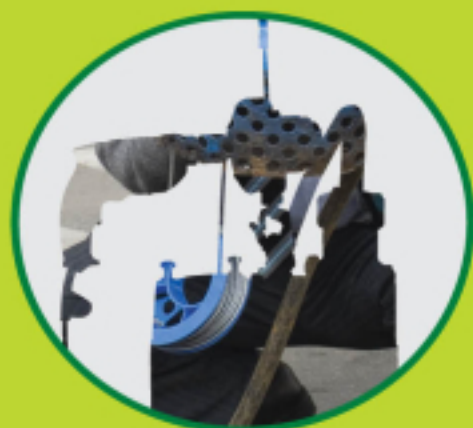
## How to set Pulley-Man



AC motor / Used one-wire



Hand drill / Used two-wire



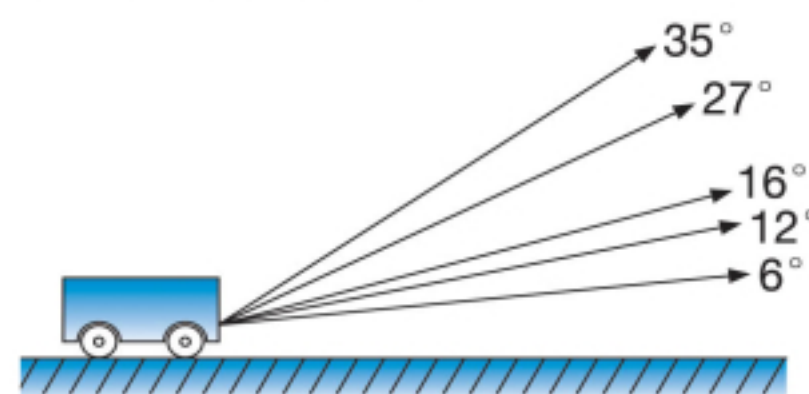
Hand drill / Used one-wire

## How to use it's capability

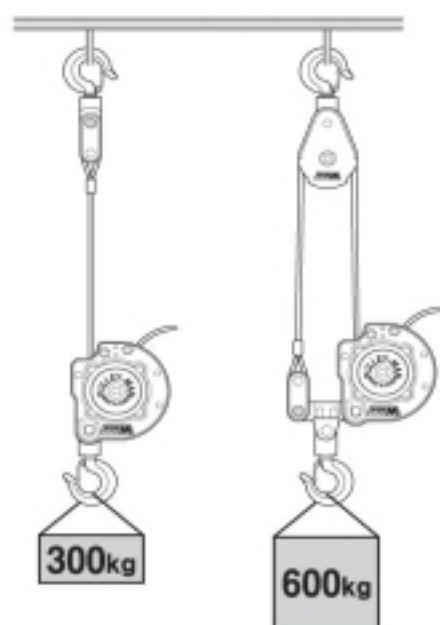
## CSW-3060 Pulley-Man's Several how to use and it's capability

- Maximum weight by tilts when drawing a subject with wheels on the plane(kg)
- You can apply above methods at any position, even at 360°

Used Wire Number		1-Wire	2-Wire
Max. Weights by Tilts	6°	1,500kg	3,000kg
	12°	975kg	1,950kg
	16°	825kg	1,650kg
	27°	585kg	1,170kg
	35°	450kg	900kg



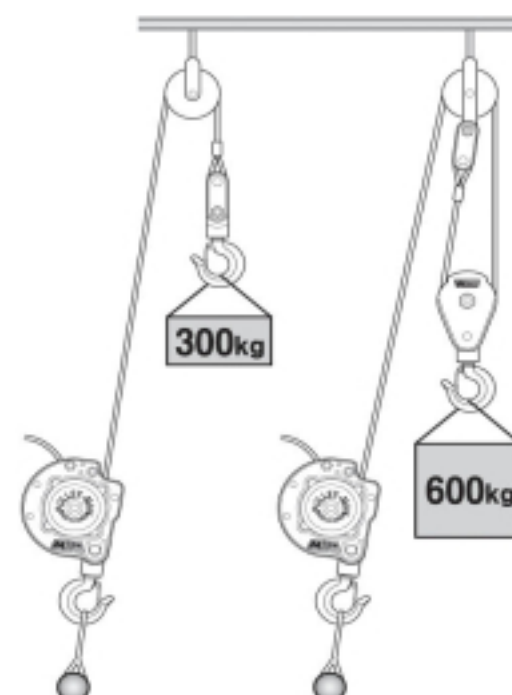
### Fixed Wire hook



### Fixed PULLEY-MAN



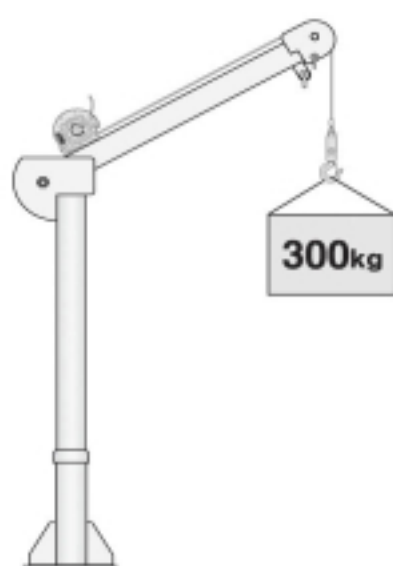
### Fixed PULLEY-MAN on the bottom



## How to use CSW-CRANE

## CSW Crane can be adjusted 3 different angles and 360° rotation

### 1-wire



### 2-wire



### Fixed wire hook at boom end



### Fixed PULLEY-MAN at boom end





## APPLICATIONS



Marine



Industrial



Job Site



Home



Farm



Automotive

## SPECIFICATION



Max. weight by use(kg)	Used wire	Wired weight	Max. weight by tilts when drawing a subject with wheels on the plane(kg)				
			6°	12°	16°	27°	35°
	1-wire	300kg	1,500	975	825	585	450
	2-wire	600kg	3,000	1,950	1,650	1,170	900
Working distance		Usable as much as the wire rope's length					
Working speed(m/min)	1-wire	10.3(No-load) 3.75(Max. load)					
	2-wire	5.1(No-load) 1.85(Max. load)					
Weight(kg)		3.5					
Wire rope	Dia(mm)	4.76 airplane wire rope(7×19)					
	Standard Specification	Wire rope 12m, socket, hook, end stopper					
	Weight(kg)	1.6					
Parts in 2-wire use	Standard Specification	Hook cover for 2-wire, sheave(pulley)					
	Weight(kg)	0.85					

## PULLEY-MAN CO.,LTD

대구광역시 북구 산격동 1629 (산업용재관 13동 15호 1F)  
TEL. (053)381-4989 FAX.(053)604-1317